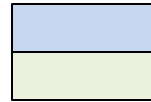
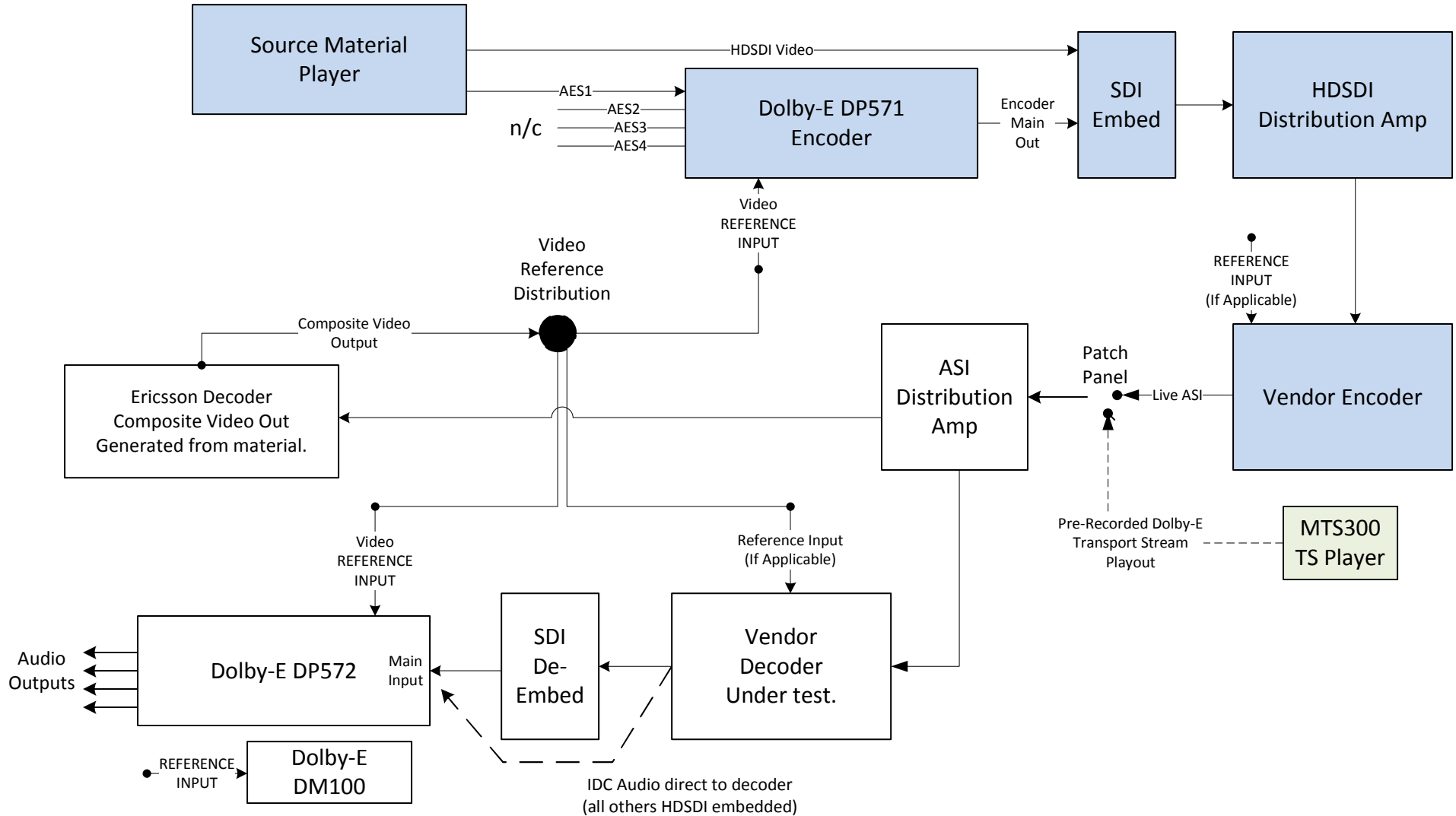


Dolby-E Testing Schematic
Live Encoding and Pre-Recorded
Transport Stream Payout
WBU-ISOG 2011



Equipment used in live encoding test
 Equipment used for prerecorded TS payout testing.



- Dolby-E D572 Decoder used to monitor CRC errors.
- Alternate Dolby DM-100 used for secondary checks